

**2018 CLEVELAND DEEPWATER RACE**  
**SAILING INSTRUCTIONS**  
**August 1, 2018**

**1. Rules**

- 1.1 This race will be governed by the Racing Rules of Sailing (RRS), the rules of Inter-Lake Yachting Association (I-LYA), and, where and when applicable, the International Regulations for Preventing Collisions at Sea (IRPCS/COLREGS).
- 1.2 RRS 63.7 is changed to read: In the event of a conflict between the Sailing Instructions and the Notice of Race, the Sailing Instructions shall prevail.
- 1.3 All Class Association, One-Design, JAM & PHRF rules are changed to allow the use of marine VHF radios, LORAN, GPS, and DGPS.
- 1.4 Encounters with commercial or government vessels shall not be grounds for redress.
- 1.5 Interference with government and/or commercial vessels shall be grounds for protest and possible disqualification.
- 1.6 The Organizing Authority for this race is Inter-Lake Yachting Association.

**2. Entries**

- 2.1 Boats shall enter by completing registration with the organizing authority prior to the deadlines and as prescribed in the Notice of Race.
- 2.2 A “scratch sheet” of eligible Cleveland Deepwater entrants and handicaps may be provided to participants with the race packet. Failure to provide a complete or accurate scratch sheet shall not be grounds for redress.
- 2.3 Eligibility and placement within divisions shall be determined using handicaps supplied by the Organizing Authority and by the Cleveland Deepwater Chairman whose decision is final, without appeal and not grounds for redress. This changes RRS rule 60.1(a) and 60.1(b).

**3. Notices to Competitors**

- 3.1 **Before the Start:** Notices to Competitors will be posted on Official Notice Board located on the Edgewater Yacht Club (EWYC) patio.
- 3.2 **After the Start:** Notices to Competitors will be posted on the Official Board located on the pavilion at Put-In-Bay Yacht Club (PIBYC).

**4. Changes to Sailing Instructions**

- 4.1 Any changes to the Sailing Instructions shall be posted on Official Notice Board by 4:00 pm the afternoon of the race. Notices may also be posted at Cleveland Yachting Club and Lakeside Yacht Club. However, failure of any or all notices or changes to be posted at either Cleveland Yachting Club and/or Lakeside Yacht Club or locations other than the Official Notice Board, shall not be grounds for redress.

**5. Check-In**

- 5.1 At least ten (10) minutes prior to the first warning of the first class to start, all boats shall checkin with the Race Committee boat flying the “L” flag and shall hail their sail number until acknowledged by the Race Committee.

**6. Signals Made Ashore**

- 6.1 Signals made ashore **before the race** will be displayed at the flagpole located immediately north of the EWYC clubhouse.

- 6.2 Flag AP when flown before the race with two sounds (one sound when lowered) means “The race is postponed.” The first warning signal will be made not less than thirty (30) minutes after AP is lowered. This changes RRS race signal “AP.”
- 6.3 Signals made ashore after the race will be made from the flag pole located at the end of the PIBYC dock.

## **7. Class Flags & Start Order**

- 7.1 PHRF A Class flag is Numeral Pennant #1. First Warning scheduled for 5:25 PM
- 7.2 PHRF B Class Flag is Numeral Pennant #2. First Warning scheduled for 5:30 PM
- 7.3 JAM Class Flag is Numeral Pennant #3. First Warning scheduled for 5:35 PM

## **8. The Start**

- 8.1 The first warning for the first start will be at 5:25 pm Eastern Daylight Savings Time.
- 8.2 Races will be started using RRS rule 26
- 8.3 The Start line shall be between EWYC “S” Mark and the staff flying an Orange flag on the Race Committee signal boat.

## **9. Recall**

- 9.1 Classes subject to General Recall shall immediately clear the start area and shall start after all other classes, including prior recalled classes, have started. This changes RRS rule 29.2.
- 9.2 The Race Committee may attempt to hail the boat, or boats, which have started improperly. However, the following are not grounds for redress: failure of committee to hail any or all boats, failure of a boat to hear or receive its hail, timeliness of the hail, or the order of boats within the hail.

## **10. The Course**

- 10.1 The course is as follows:
  - 9.1.1 EWYC “S” Mark (approximately (N 41 31.233 x W 81 45.939).
  - 9.1.2 Ballast Island to PORT
  - 9.1.3 Then approximately 1.2 nm at approximately 230<sup>0</sup> mag to the Finish Line.
- 10.2 Course length is 48.2 nm.

## **11. Finish**

- 11.1 Lead boats are requested to contact the I-LYA Deepwater Finish Committee on VHF channel 72 or via phone at 419-340-8050 as they approach the Ballast Island light.
- 11.2 Prior to Docking all boats competing in the Cleveland Deepwater Race that are also registered for dockage for the Bayweek Regatta, shall affix to their boats backstay(or equivalent), and not lower than 48” from deck level, the Blue streamer furnished with your race package. This shall remain affixed for the duration of your stay at the PIB docks.
- 11.3 The Finish Line shall be between two Orange buoys located (on a north-south line) between Middle Bass and South Bass Islands.
- 11.4 The inner buoy will be placed approximately 500 feet from the shore of South Bass Island at approximately N 41 39.818 W 82 48.488.
- 11.5 The outer buoy will be placed approximately 500 feet north of the inner buoy at approximately N 41 39.905 W 82 48.497.
- 11.6 All boats shall finish between the two buoys keeping the inner buoy to port and the outer buoy to starboard.
- 11.7 Finish Line sightings will take place from a trailer flying an RC flag on the shore of South Bass Island, south of the inner buoy, at approximately N 41 39.743 W 82 48.474. Be positive you are properly identified as you finish.
- 11.8 For night finishes or during periods of reduced visibility, each finishing buoy will have a flashing White light.

- 11.9 Boats finishing at night and/or during periods of reduced visibility shall illuminate their sail numbers prior to crossing the finish line and shall keep them illuminated until well clear of the finish line.
- 11.10 All boats shall turn in a “finish card.” A Finish Card is included in your race packet and is to be filled out and placed in the finish card box located on the Dock Masters boat located at the end of A Dock within three (3) hours after finishing.

## **12. Time Limit**

- 12.1 There shall be no time limit for this race.

## **13. Retiring From Race**

- 13.1 A boat that retires or withdraws from the race , if within range, via Channel 71 (Cleveland Deepwater Committee) or the I-LYA Deepwater Finish Committee on VHF Channel 72 or phone at 419-340-8050.

## **14 Scoring**

- 14.1 Scoring will be Low Point based on Time On Distance.

## **15. Protests**

- 15.1 Protests forms are available at race headquarters at PIBYC, and protests shall be delivered there during the Protest Time as described in Sailing Instruction 15.2.
- 15.2 Protest Time shall end two (2) hours after the last boat has either finished, retired or withdrawn from the race.
- 15.3 Protest notices will be posted on the Official Bulletin Board shortly after Protest Time ends to inform competitors where and when there is a hearing in which they are parties and or named as a witness. This posting constitutes the notice required by RRS 63.2 (Time and Place of the Hearing).
- 15.4 Protests will be heard at the Protest Office at PIBYC in approximately the order of receipt at beginning at approximately 3:00 PM Thursday, August 4, 2016.
- 15.5 Notices of protests by the race committee or protest committee will be posted on the Official Notice board to comply with rule 61.1(b).

## **16. Equipment & Equipment Changes**

- 16.1 All boats shall carry U.S. Coast Guard required safety equipment.
- 16.2 A boat shall use the sail numbers entered on the registration form and shall not use a sail with a different number during the race without prior written permission of the Race Committee.

## **17. Radio Communication**

- 17.1 A boat, while racing, shall neither make nor receive radio communication not available to all boats. This includes the use of mobile phones or any devices to transmit and/or receive *race related* information and/or data.
- 17.2 Any boat may monitor Cleveland Deepwater Race Committee communications on VHF channel 71.
- 17.3 Any communications between race committee personnel or committee boats, which may be overheard by competitors, shall not be grounds for redress.

## **18. Prizes**

- 18.1 Prizes will be awarded to the First, Second and Third Place finisher in each class and division.

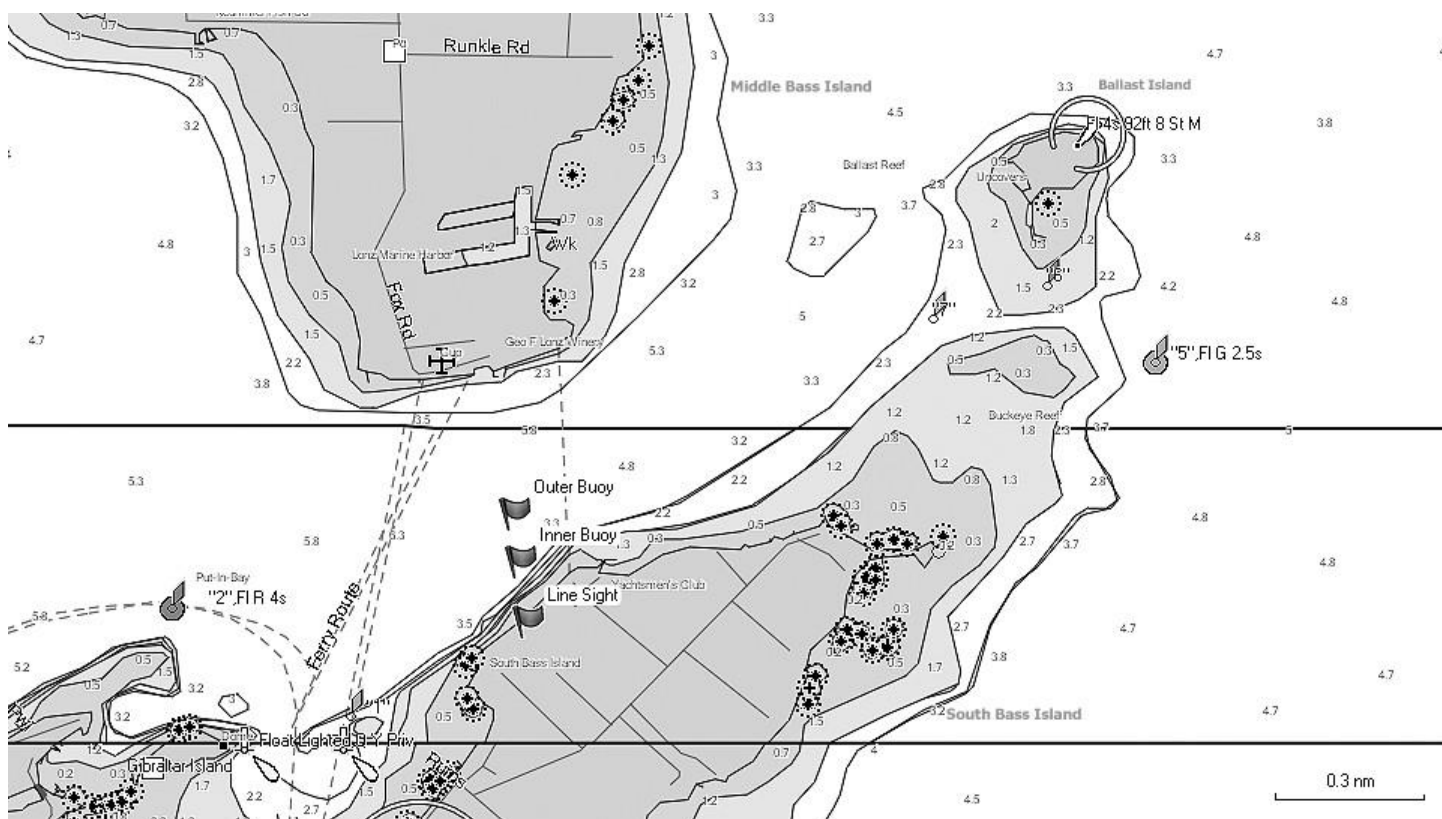
## 19. Dockage

- 19.1 After finishing, boats who have registered for the I-LYA Bayweek Regatta and will be docking at the I-LYA docks shall call the I-LYA Dock Master Larry Inguagiato on Channel 69 or by phone by calling 419-819-0484 for docking assignment.
- 19.2 Dockage for boats not registered for the I-LYA Regatta is not included in your Cleveland Deepwater Race registration. Dockage for non-regatta participants is available ala carte on a first come first serve basis through the I-LYA Bay Week registration web site.
- 19.3 Please refer to Sec 11.2 concern identifying your boat to the dock master for dockage for the Bayweek Regatta.

## 20. Disclaimer of Liability

- 20.1 Competitors participate in the race entirely at their own risk (See RRS rule 4). The organizing authority, its volunteers and/or employees will not accept any liability for material damage, personal injury or death sustained in conjunction with or prior to, during, or after the race.

## Cleveland Deepwater Finish Diagram (General Reference Only – Not To Be Used For Navigational Purposes)



**Cleveland Deepwater Finish Card**  
*(legibility counts - If we can't read it ....)*

Name of Your Boat: \_\_\_\_\_

Your Sail Number: \_\_\_\_\_

Time of Your Finish (HH:MM:SS): \_\_\_\_\_

Boat Ahead, if known (Sail Number or Name): \_\_\_\_\_

Boat Behind, if known (Sail Number or Name): \_\_\_\_\_

***(Place in the finish card box located on the Dock Masters boat located at the end of A Dock within three (3) hours after finishing.)***

***Detach Here*** -----

**Cleveland Deepwater Finish Card**  
*(legibility counts - If we can't read it ....)*

Name of Your Boat: \_\_\_\_\_

Your Sail Number: \_\_\_\_\_

Time of Your Finish (HH:MM:SS): \_\_\_\_\_

Boat Ahead, if known (Sail Number or Name): \_\_\_\_\_

Boat Behind, if known (Sail Number or Name): \_\_\_\_\_

***(Place in the finish card box located on the Dock Masters boat located at the end of A Dock within three (3) hours after finishing.)***